

# DESIGN 911

Centre for Porsche

## K&N Induction Kit

Instructions for when fitting to 997

Part no: 996167001



**Tools Requires:**

1/4" drive ratchet.  
8MM Spanner  
10mm spanner  
1/4 Drive Ratchet  
8mm 1/4 Drive socket  
10mm 1/4 Drive socket  
3mm 1/4 Drive Allen Key Socket  
3mm Allen Key  
4mm Allen Key  
5mm Drill Bit  
3/4 Drill Bit  
3/8 Drill Bit  
2.5mm Allen Key  
5mm Rivet  
Pot Rivet Gun  
Drill  
Dumpy Flat Blade screw driver

**INSTRUCTIONS:**

1. Open Engine Cover.
2. Remove and lift to one side oil filler tube.





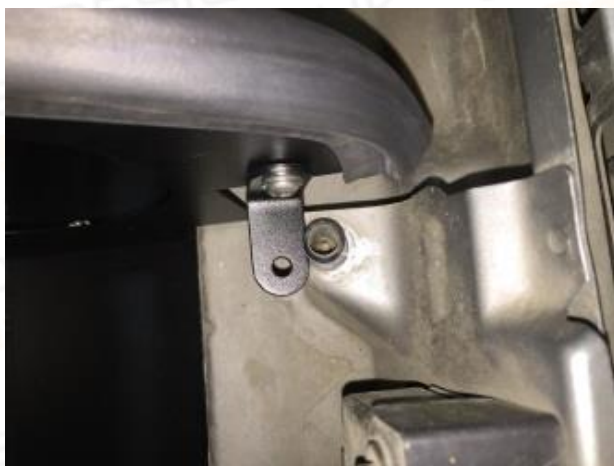
3. Unclip electrical connector on air flow meter.



4. Loosen jubilee clip that holds the induction pipe on to the throttle body.



5. Lift out original air box.
6. Put kit together as per K and N instructions No7 - 15
7. Remove plastic pin by engine lid catch



8. Follow K and N instructions no 16
9. Take bracket shown in No16a put in place as per picture, Line up bolt hole on heat shield and mark with pen.



10. Drill a 5mm hole where you have just marked with a pen.



11. Bolt Bracket to heat shield and rivet bottom bracket through hole just drilled.





12. Follow K and N instructions 17 – 27

13. If triptronic follow K and N instructions 28 – 36. If Manual follow K and N instructions 32 – 36.

