

Removal

1. Detach folding top.
2. Remove trim strips.
3. Unclip interior lights. The inside covering of the safety bar should be unscrewed at the bottom and removed to the rear.



Fig. 202

4. Undo trunk clips with short or flexible shaft screwdriver together with the other screws in the top rear section and remove top rear section.
5. Unscrew the top of the top rear section.
6. Release top handles, open zipper and unscrew eccentric plate of top handle.
7. Remove eyebolts of rear bar from angle brackets.
8. Undo screw fixings of rear and clamping bars in the corner formed by the top edge of the fender and the safety bar, and remove.



Fig. 203

9. Push the clamp bar of the top rear section down and then pull out of the safety bar first upwards and then downwards so that the top rear section can now be removed to the rear.



Fig. 204

10. Unscrew top handle.
11. Chisel off the angle bracket from the top section of the rear panel.

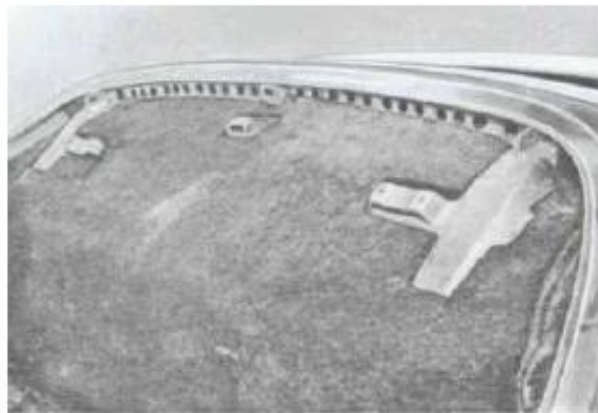


Fig. 205

12. Pull off seals in front of and behind the safety bar covering.
13. Unscrew and detach covering (chromed plate) of safety bar.
14. Unscrew Tenax knobs and if desired seal the holes with short self-tapping screws or extend the holes and seal with solder or weld and solder over.
Cellulose or touch up any paint scratches.

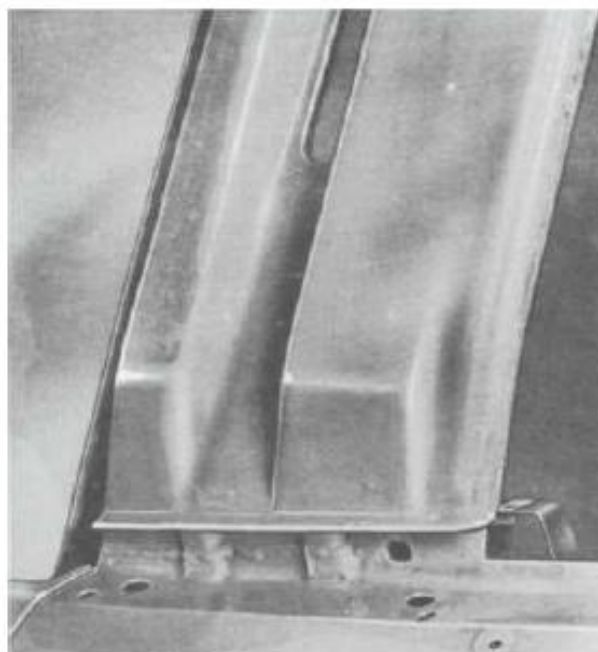


Fig. 206

Installation

1. Secure cage nuts for top handles with 6 mm (0.24") screws to prevent rattling.
2. Seal holes for tubular bar fixing with sealing plugs.
3. Fit trim strips along fender top edge, drill, seal with Terostat strip, place moulding underneath and secure with roundhead countersunk self-tapping screws. Secure bolts at front with washers and self-tapping nuts.

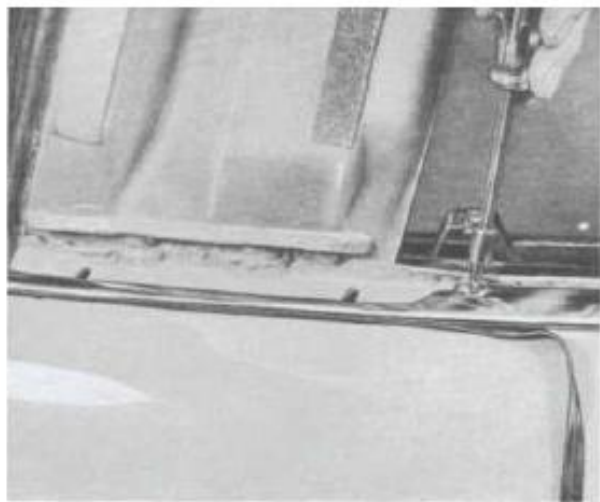


Fig. 207

4. Pull sealing frame and bezel onto glass. Pull a cord into the sealing frame and insert glass.



Fig. 208

5. Seal and clean rear window glass.
6. Place safety bar covering in position and screw up.
7. Fit seals on both sides of safety bar and cement in position. Additionally secure front seal with plug and plastic rivets.
8. Align rear tabs on safety bar.
9. Attach new inside covering on safety bar.
10. Connect up interior lights and insert.
11. Fit new rear panel top section.
12. Attach rear paneling with trunk clips.
13. Attach new trim strips.
14. Check car for leaks. Carry out water test.

Note

On USA vehicles it is now permissible to install complete occasional seats instead of the luggage shelf.

This conversion is possible as from chassis no.

118 50065
118 55016
118 60062
118 70040
118 80036
128 70207

The following material is necessary for subsequent installation:

1	Green tinted rear window	901.565.551.45
	or "heated" 100 W green rear window	901.565.551.50
1	Sealing frame	901.565.052.40
1	Seal for rear of safety bar	901.565.930.41
1	Left-hand trim strip	901.565.555.40
1	Right-hand trim strip	901.565.556.40
1	Cover plate	644.541.921.06
1	Left-hand trim strip cover	901.565.561.40
1	Right-hand trim strip cover	901.565.562.40
1	Inside cover	901.565.017.42
1	Left-hand trim strip	901.555.091.42
1	Right-hand trim strip	901.555.092.42
8	Roundhead countersunk self-tapping screws	900.143.038.02
2	Countersunk self-tapping screws	900.144.009.00
2	Sealing plugs (foam rubber)	901.565.563.40
1	Front seal for safety bar	901.565.091.40
1	Rear panel top section	901.555.096.42
4	Plugs	991.591.520.40
4	Plastic rivets	991.591.521.40
4	Self-tapping nuts	999.591.340.02
4	Washers	900.151.006.40
app. 2m (6.5')	Terostat strip	999.911.088.50
app. 2m (6.5')	Molding for trim strip	



Slight dimple about here, but on other side. Ball bearing nests in dimple keeping handle locked in the closed position.

Behind slotted screw is a small spring and then a ball bearing. The bearing projects just through the handle and nests in the dimple located in the backing plate.

Threaded hole for handle stop screw. Stop prevents handle from over opening keeping latch screw indexed into window receiver.











